

PHANTOM

Automated Solutions, Inc.

Overview

- Phantom is a powerful scripting language used to automate Graphical User Interfaces (GUIs)
- Used for
 - Test Automation
 - Process Automation
 - Application Performance Analysis
- Three products are provided that support the Phantom language
 - Phantom Test Driver (PTD)
 - Phantom Sidekick
 - Phantom Command Line Utility
- Phantom can be customized to support customer needs

Company

- Phantom Automated Solutions started in 1999 with the goal of providing cost effective GUI automation tools
 - Nearly fifteen years experience in automated testing
 - Experience providing creative solutions to automation challenges
- Released Phantom v1.0 in 2000
 - Used by thousands worldwide as an effective, affordable automation solution
- Custom development and support services are provided
 - Custom function development
 - Integration support
 - Automation project support

Mission Statement

Mission

To support customer automation projects by providing powerful, cost effective automation tools and by providing custom tool development and automation expertise.

Benefits of Automation

- Efficiency
 - Automated tasks can often be performed much quicker than manual tasks
- Repeatability
 - Automated tasks run the same way every time
- Reliability
 - Automated tasks reduce the risk of human error

Automation can save TIME and MONEY

Phantom

- Phantom is a powerful scripting language used to perform automation
 - Language syntax is similar to C
 - Scripts can be created using any text editor
 - Language is full featured, with flow control, variable control, exception handling, and custom functions
- Phantom scripts are processed using an interpreter, which converts script commands to automation actions
 - Script interpreter built into Phantom-supported products
- Phantom includes a large automation function set
 - Custom functions easily added in scripts or through an external Dynamic Link Library (DLL) interface
- Phantom provides a reliable, powerful, robust solution to GUI automation needs

Phantom

Language Features

- Large built-in GUI automation function set
- Exception handling
- Full script flow control
- Complex built-in data types
 - windows
 - bitmaps
 - option sets
- User-defined functions
- Intuitive window access hierarchy
- C-like syntax
 - Smaller learning curve
- Multi-dimensional data arrays
- Easily customizable

```
# Use the Window Declarations for the PhantomTarget application
use "PhantomTarget.dec";

# A user defined function:
function string GetName() {
    # Request input for a name
    string Name = InputString("Enter your name: ");
    if(GetLength(Name) <= 0) {
        exception e;
        e.SetError("User name must not be empty!");
        e.throw();
    }
    return Name;
}

# Start the PhantomTarget application
System("../PhantomTarget.exe");

# Call User Function
string sName = GetName();

# Open the Edit controls dialog
PhantomTarget._Controls.EditBo_x.Select();

# Display the name
Edit.Edit3.SetText("Hello " + sName);

# Wait for user input before continuing
Alert("Click OK to Continue");

# Close the Edit dialog
Edit.Close();

# Close PhantomTarget
PhantomTarget.Close();
```

Phantom Uses

- QA Test Automation
 - Automate scripted manual test procedures
 - Regression testing
 - Functional testing
 - Performance testing
- Process Automation
 - Repetitive manual tasks
 - Time consuming tasks
 - Process scheduling
- Application Performance Analysis
 - Repetitive stress analysis
 - Response time analysis
 - Load response analysis

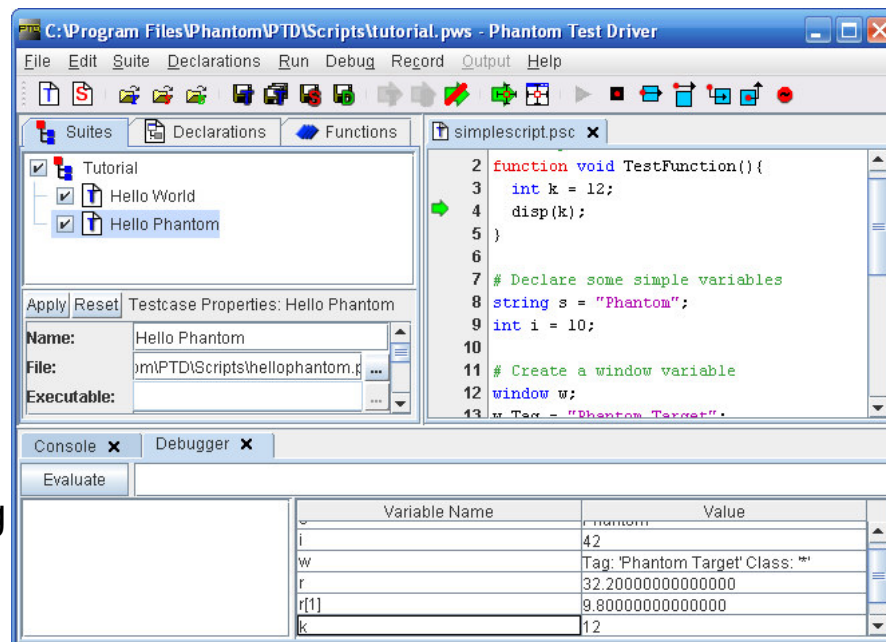


Phantom Test Driver

- The Phantom Test Driver (PTD) is the flagship product utilizing the Phantom language
 - Phantom script interpreter built-in
- PTD is primarily designed to build and manage automated GUI test processes

Some features of PTD include

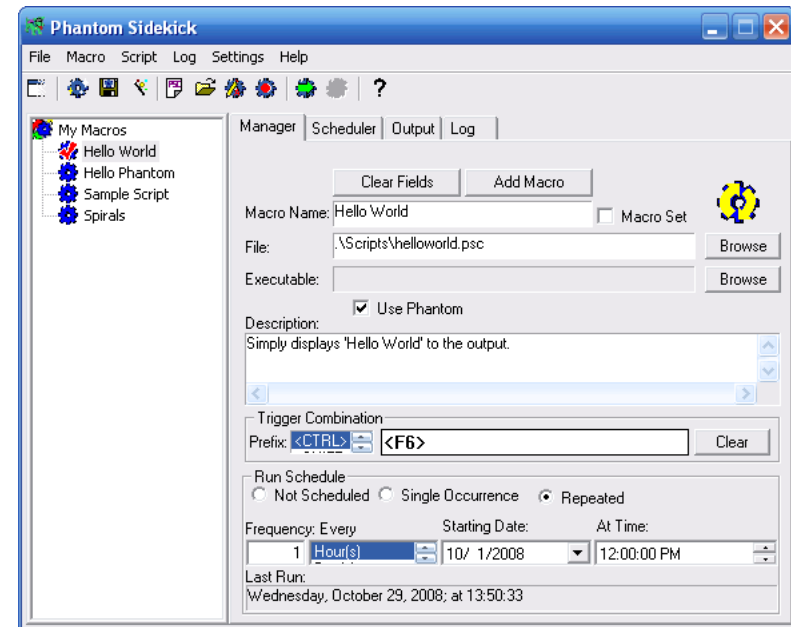
- Built-in syntax sensitive script editor
- Interface to the Phantom script recorder
- Phantom script debug capability
- Script organization and group execution through PTD Suites
- Script output analysis
- Phantom console
- Script execution pre- and post-processing
- Remote script execution via interaction with the Phantom Remote Agent



S

Phantom Sidekick

- Phantom Sidekick is a macro utility used to execute Phantom scripts
 - Acts as a 'system wide' macro, performing automated tasks across different applications
- Sidekick can run automation scripts in the following ways:
 - Customizable keyboard triggers
 - Script scheduler
 - Quick menu from System Tray
- Useful for:
 - Form entries
 - Cross-application macros
 - Scheduled maintenance tasks



Command Line Utility

- The Phantom Command Line Utility is a DOS based application used to execute Phantom scripts.
 - Any Phantom script can be run using the command line utility
 - Useful for deploying Phantom automation scripts developed in either PTD or Sidekick
 - Includes a Script Recorder utility and a window information (Window Declarations) recorder
- The Command Line Utility is available as a free download from the Phantom website

Support

- Phantom Automated Solutions fully supports all Phantom products
 - Available via e-mail for questions about the Phantom language or on how to use Phantom Test Driver or Phantom Sidekick
- Customization and development services are also available
 - Custom function and variable development
 - Phantom engine integration services
 - Automation consulting services
- For more information, contact:

support@phantomtest.com

Contact

Phantom Automated Solutions would be pleased to discuss how it can help with your automation needs.

For more information, please contact:

John C. Van Arsdall

President

P.O. Box 835
Arnold, MD 21012
(410) 212-9318

john@phantomtest.com
<http://www.phantomtest.com>